

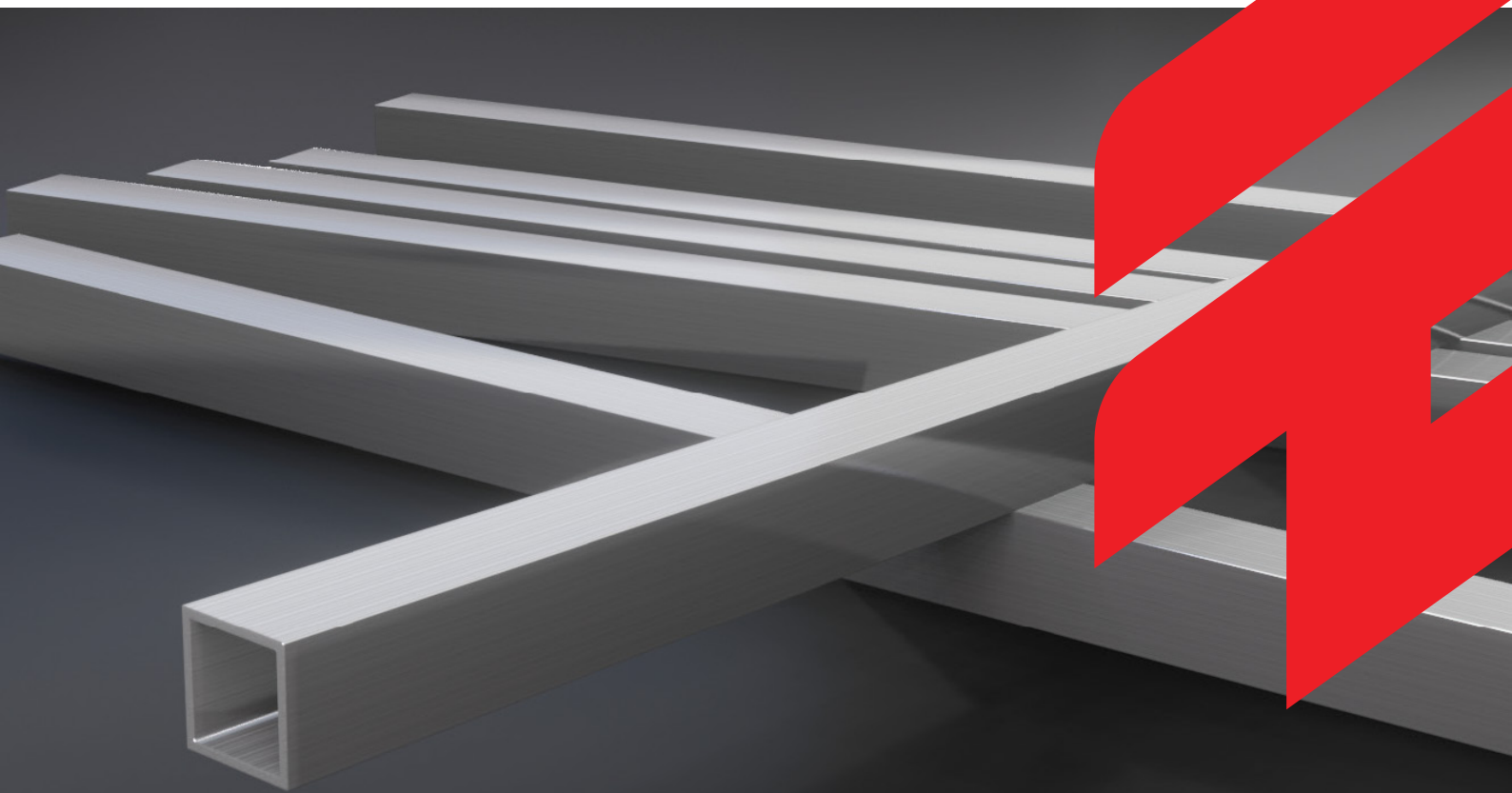


**Terra
Firma™**

INFRASTRUCTURE IMAGINED DIFFERENTLY

Structural Profiles Catalogue

FRP Structural Profiles



About FRP

The unique characteristics of composites make them suited for an immense variety of uses, including the civil and public infrastructure, marine, aerospace, petroleum and many more.

At Terra Firma Industries, we're passionate about modern composite materials. That's why we developed our TerraGrate FRP range.

TerraGrate FRP (Fibre Reinforced Polymer/Plastic)

is lighter and stronger than equivalent traditional materials. As a result, FRP sheeting offers massive time and cost savings during installation and maintenance. TerraGrate FRP does not corrode, rot or burn and can be easily fabricated on site using common hand tools. It's perfect for use in exposed, corrosive and chemical environments to reduce costs and improve safety.

TerraGrate FRP offers a range of benefits over traditional materials:



Lightweight



Strong



Chemical resistant



Corrosion resistant



Fire resistant



Cost effective



Non-conductive



Durable



Colour stable



Design friendly



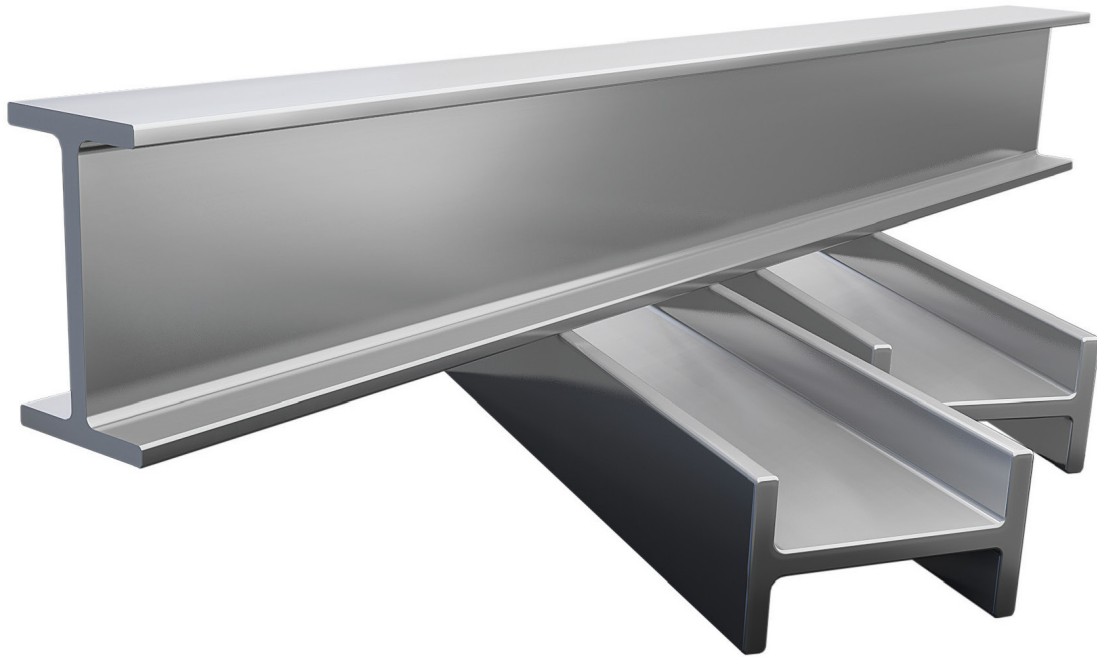
Improved OH&S

Because FRP is made by combining a matrix of resins and fibres, the resins can be tailored to meet very specific requirements including chemical, electrical, or fire and the fibres can be chosen for different strength and flexibility ratings.

TerraGrate offers a full range of FRP products including walkway and platform mesh, support pedestals, handrails, stairs, anti-slip flooring, marine-grade walkway and structural profiles.



Structural Profiles



TerraGrate® Fibreglass Reinforced Plastic Structural Profiles are suitable for a wide range of applications including industrial, commercial and marine use.

These FRP profiles outperform traditional steel, wood, and aluminum for safety and strength. They are corrosion and rot resistant, have dimensional stability, high strength to weight ratio, lightweight, non-conductive (thermal and electrical), and fire resistant (ASTM E-84).

TerraGrate® profiles include channels, beams, angles, tubes, rods, embedment angles, toe plates, flat sheets and rods. Structural shapes can be used in a wide array of applications replacing traditional components such as steel, aluminum and wood.

All profiles are manufactured and tested to Australian standards and available in a range of resins and colours to order. Vinyl Esther resin stocked as standard.

TerraGrate® also offers custom shapes to meet your specific design requirements.

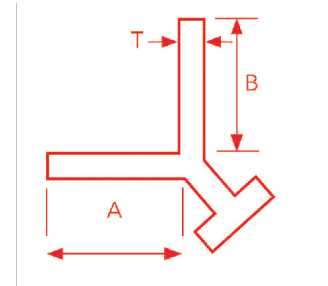
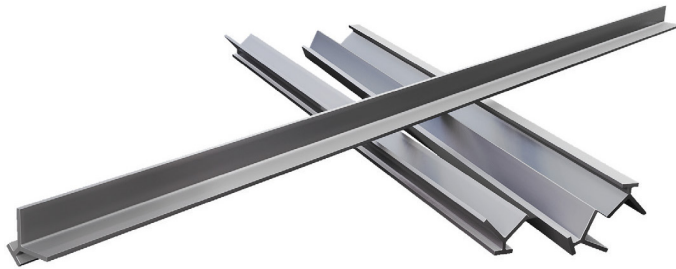


Structural Profile Products

Angle (Embedded Y-Shape)



Typically Stocked Item

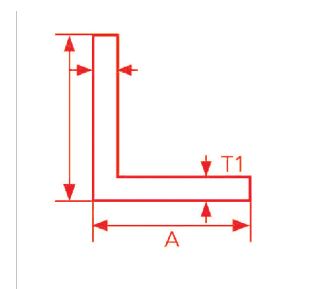


Part Number	Dimension, A (mm)	Dimension, B (mm)	Thickness (mm)	Weight (kg/mm)	Length (mm)
FSPEA25386.4	25	38	6.4	1.40	5.8
FSPEA50386.4	50	38	6.4	1.70	5.8
FSPEA50506.4	50	50	6.4	1.14	5.8
FSPEA76766.4	76	76	6.4	1.77	5.8
FSPEA76769.5	76	76	9.5	2.57	5.8

Angle (Equal)



Typically Stocked Item



Part Number	Dimension (A) mm	Dimension (B) mm	Thickness mm	Weight (kg/m)	Length (mm)
FSPA50506.4	50	50	6.4	1.14	6.1
FSPA76769.5	76	76	9.5	2.57	6.1
FSPA1011019.5	101	101	9.5	3.48	5.8
FSPA1021026.4	102	102	6.4	2.50	6.1

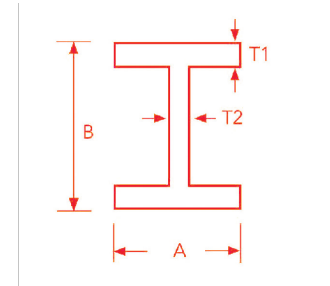
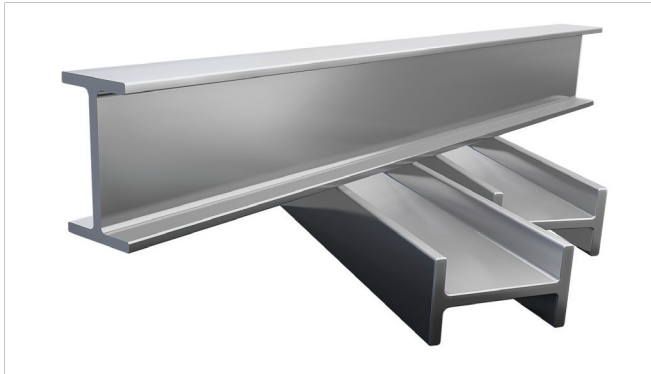


Structural Profile Products

Beam (I-Shape)



Typically Stocked Item

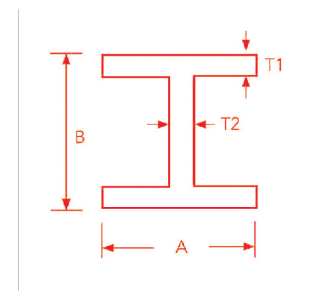
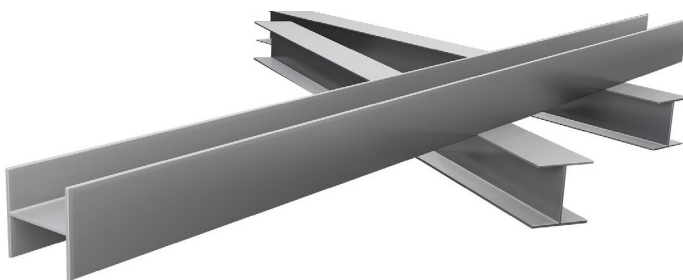


Part Number	Dimension (A) mm	Dimension (B) mm	Thickness mm	Weight (kg/m)	Length (mm)
FSPIB501026.46.4	50	102	6.4	2.40	6.1
FSPIB761526.4	76	152	6.4	3.59	6.1
FSPIB1521279.59.5	152	127	9.5	10.74	5.8
FSPIB25412712.712.7	254	127	12.7	11.90	5.8

Beam (Wide Flange)



Typically Stocked Item



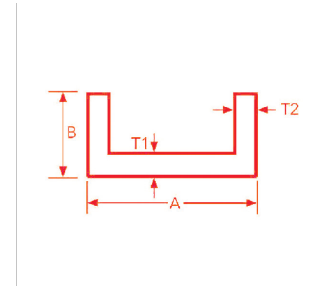
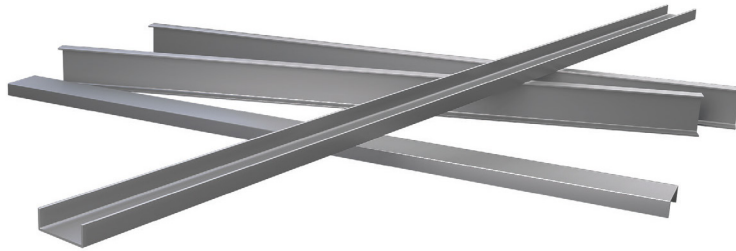
Part Number	Dimension (A) mm	Dimension (B) mm	Thickness mm	Weight (kg/m)	Length (mm)
FSPHB1521529.5	152	152	9.5	8.10	6.1

Structural Profile Products

Channel



Typically Stocked Item

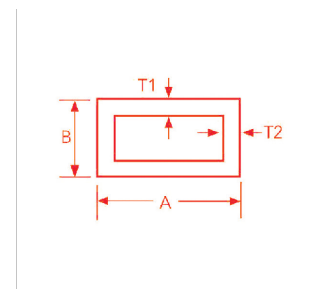
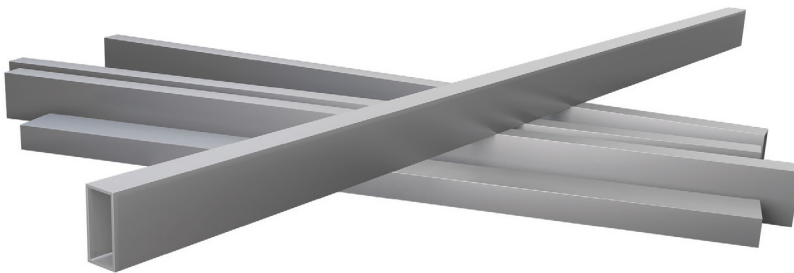


Part Number	Dimension (A) mm	Dimension (B) mm	Thickness mm	Weight (kg/m)	Length (mm)
FSPCC102446.4	102	44	6.4	2.10	6.1
FSPCC152.442.99.59.5	152.4	42.9	9.5	3.95	6.1
FSPCC203569.59.5	203	56	9.5	5.34	6.1
FSPCC2547012.712.7	254	70	12.7	8.90	6.1

Rectangular Hollow Sections



Typically Stocked Item



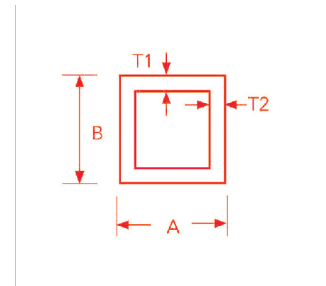
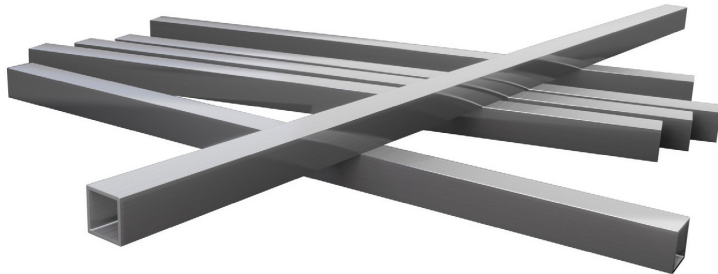
Part Number	Dimension (A) mm	Dimension (B) mm	Thickness mm	Weight (kg/m)	Length (mm)
FSPRHS125756	125	75	6	4.35	6.1

Structural Profile Products

Square Hollow Sections



Typically Stocked Item

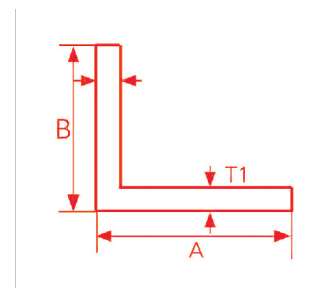
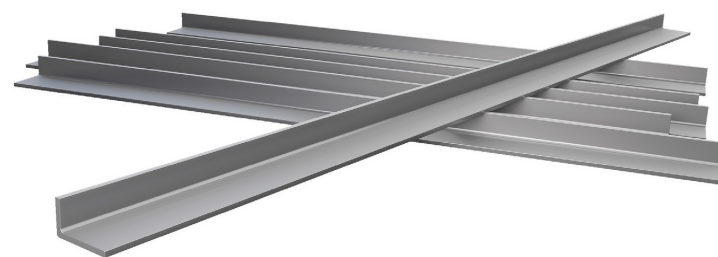


Part Number	Dimension (A) mm	Dimension (B) mm	Thickness mm	Weight (kg/m)	Length (mm)
FSPSHS50506.4	50	50	6.4	2.44	1.10, 2.88, 3.23, 5.00, 5.80, 6.10
FSPSHS76766.4	76	76	6.4	3.39	6.1
FSPSHS89896.4	89	89	6.4	3.95	6.1
FSPSHS1011016.4	101	101	6.4	4.61	5.8
FSPSHS1021028	102	102	8	6.00	6.1

Unequal Angle



Typically Stocked Item



Part Number	Dimension (A) mm	Dimension (B) mm	Thickness mm	Weight (kg/m)	Length (mm)
FSPUA180808	180	80	8	3.89	6.1

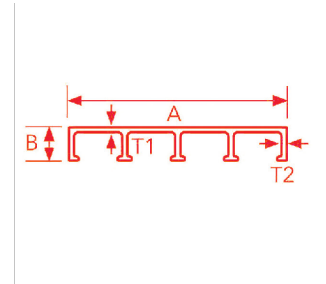
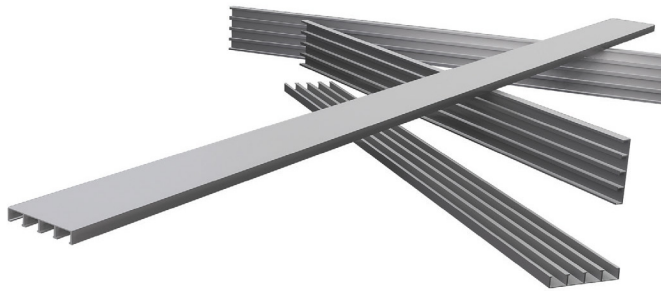


Structural Profile Products

Decking



Non Stock Item

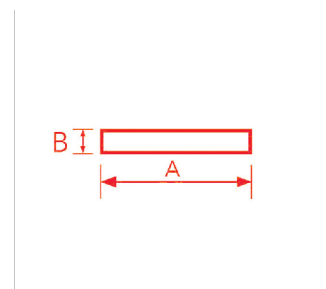
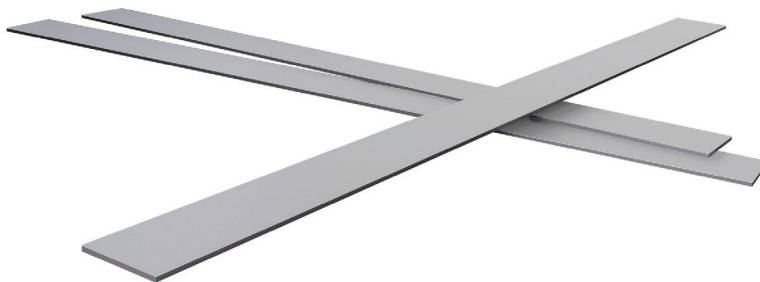


Part Number	Dimension (A) mm	Dimension (B) mm	Thickness (T1/T2) mm	Weight (kg/m)
FSPDB250-32	250	32	5	4.5
FSPDB250-40	250	40	6	5.3
FSPDB302-48	302	47.5	6.4	8.5

Flat Strip



Non Stock Item



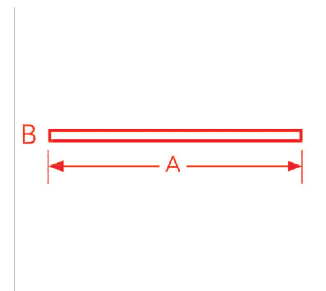
Part Number	Dimension (A) mm	Thickness (B) mm	Weight (kg/m)
FSPFS504	50	4	0.38
FSPFS12010	120	10	2.40

Structural Profile Products

Flat Plate



Non Stock Item



Part Number	Dimension (A) mm	Thickness (B) mm	Weight (kg/m)
FSPFP3.21000	1000	3.2	6.18
FSPFP3.21220	1220	3.2	7.42
FSPFP4.0800	800	4.0	6.20
FSPFP4.01200	1200	4.0	9.19
FSPFP4.81000	1000	4.8	9.3
FSPFP5.0440	440	5.0	4.25
FSPFP5.01220	1220	5.0	11.8
FSPFP6.41220	1220	6.4	14.84
FSPFP9.51220	1220	9.5	22.02
FSPFP12.71220	1220	12.7	29.44
FSPFP161220	1220	16	37.20
FSPFP191220	1220	19	44.10
FSPFP25.41222	1222	25.4	59.0

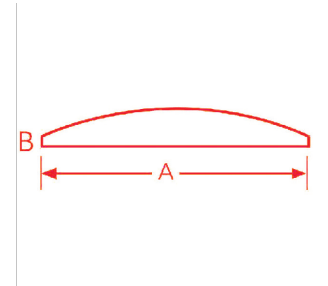


Structural Profile Products

Flat Strip (Chamfered Edge)



Non Stock Item



Part Number	Dimension (A) mm	Thickness (B) mm	Weight (kg/m)
FSPFSC48.66.0	48.6	6.0	0.56
FSPFSC503.2	50	3.2	0.29
FSPFSC603.2	60	3.2	0.36
FSPFSC704.0	70	4.0	0.54
FSPFSC903.2	90	3.2	0.54
FSPFSC1003.2	100	3.2	0.60
FSPFSC1203.0	120	3.0	0.7
FSPFSC25012.0	250	12.0	5.7
FSPFSC28010.0	280	10.0	5.32
FSPFSC30024.0	300	24.0	14.4
FSPFSC3555.0	355	5.0	3.5
FSPFSC5555.0	555	5.0	5.40
FSPFSC7515.0	751	5.0	7.20
FSPFSC7629.5	762	9.5	13.8

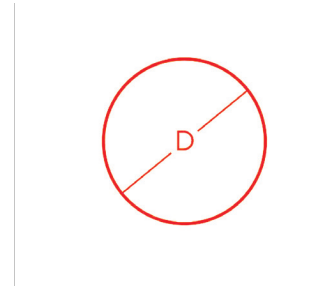


Structural Profile Products

Rods (Solid Round)



Typically Stocked Item

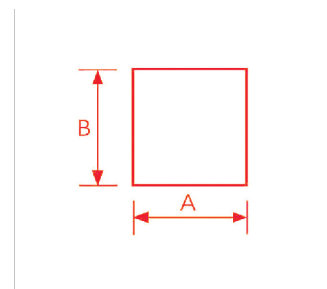
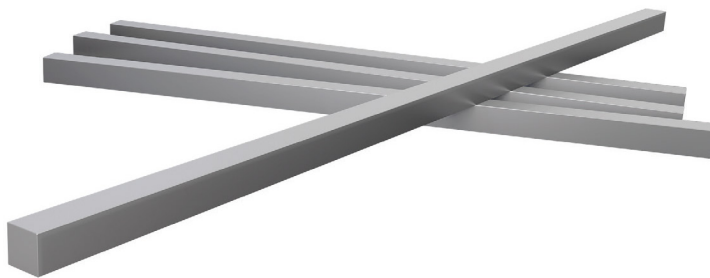


Part Number	Diameter (D) mm	Weight (kg/m)
FSPROD10X355RE	10	0.16

Rods (Solid Square)



Non Stock Item



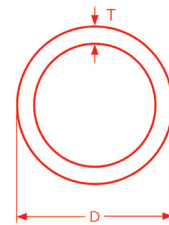
Part Number	Dimension (A) mm	Dimension (B) mm	Weight (kg/m)
FSPSSR2525	25	25	1.23
FSPSSR3232	32	32	2.0
FSPSSR3838	38	38	2.8

Structural Profile Products

Round Tube



Typically Stocked Item

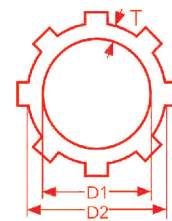
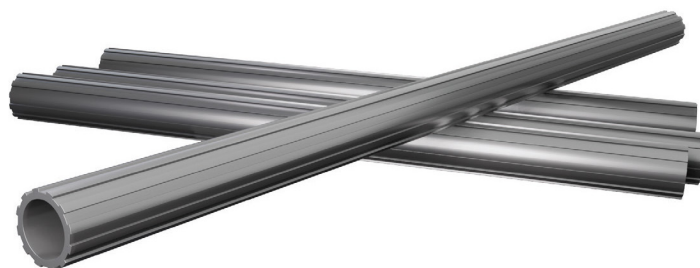


Part Number	Outer Diameter (OD) mm	Thickness (T) mm	Weight (kg/m)	Length (m)
FSPRT325	32	5	0.81	6.1
FSPRT505	50	5	1.34	6.1

Round Tubes (Corrugated)



Non Stock Item



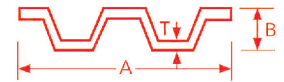
Part Number	Inner Diameter (IA) mm	Outer Diameter (OD) mm	Thickness mm	Weight (kg/m)
FSPCRT19326.4	19	32	6.4	1.11
FSPCRT25323.5	25	32	3.5	0.66
FSPCRT22325.0	22	32	5.0	0.99
FSPCRT19347.5	19	34	7.5	1.30

Structural Profile Products

Kick Plate



Typically Stocked Item

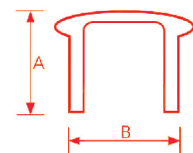
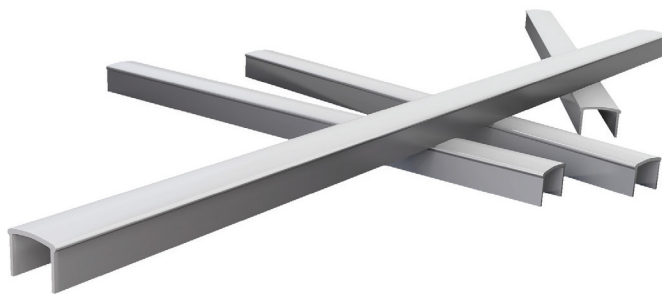


Part Number	Dimension (A) mm	Dimension (B) mm	Thickness mm	Weight (kg/m)
FSPW150153.2	150	15	3.2	1.6

Handrail (Standard)



Typically Stocked Item



Part Number	Dimension (A) mm	Dimension (B) mm	Thickness mm	Weight (kg/m)
FSPW150153.2	150	15	3.2	1.6

Structural Profile Appendix

Angle (Equal)

Part Number	Dimension (A) mm	Dimension (B) mm	Thickness mm	Weight (kg/m)
FSPEA25253.2	25	25	3.2	0.33
FSPEA25256.4	25	25	6.4	0.56
FSPEA25386.4	25	38	6.4	1.4
FSPEA30305	30	30	5	0.57
FSPEA32324	32	32	4	0.42
FSPEA38385	38	38	5	0.68
FSPEA38386.4	38	38	6.4	0.85
FSPEA45454.8	45	45	4.8	0.75
FSPEA50386.4	50	38	6.4	1.7
FSPEA50503.2*	50	50	3.2	0.62
FSPEA50506.4*	50	50	6.4	1.14
FSPEA60609.0	60	60	9.0	1.90
FSPEA76764.8	76	76	4.8	1.38
FSPEA76766.4*	76	76	6.4	1.77
FSPEA76769.5*	76	76	9.5	2.57
FSPEA767612.7	76	76	12.7	2.5
FSPEA1021026.4	101	101	6.4	2.5
FSPEA10210x8.0	101	101	8.0	2.95
FSPEA1021029.5*	101	101	9.5	3.48
FSPEA10210212.7*	101	101	12.7	4.57
FSPEA1521526.4	152	152	6.4	3.62

Beam (I-Shape)

Part Number	Dimension (A) mm	Dimension (B) mm	Thickness mm	Weight (kg/m)
FSPIB15326.44.0	15	32	6.4 / 4.0	0.51
FSPIB30383.03.0	30	38	3.0	0.53
FSPIB459.018012	45	9	180 / 12	5.40

* Standard Sizes

** Non-Standard Sizes Available Upon Request



Structural Profile Appendix

Beam (I-Shape) (cont.)

Part Number	Dimension (A) mm	Dimension (B) mm	Thickness mm	Weight (kg/m)
FSPIB501026.46.4	50	102	6.4	2.4
FSPIB5010288	50	102	8	3.0
FSPIB601806.46.4	60	180	6.4	3.6
FSPIB701406.35	70	140	6.35	3.30
FSPIB761526.46.4*	76	152	6.4	3.59
FSPIB761529.59.5	76	152	9.5	5.32
FSPIB102756.0	102	75	6.0	3.0
FSPIB1022039.59.5	102	203	9.5	7.2
FSPIB10220312.712.7	102	203	12.7	9.5
FSPIB12024012	120	240	12	10.50
FSPIB1272549.59.5	127	254	9.5	9.0
FSPIB12725412.712.7	127	254	12.7	11.90
FSPIB1271529.59.5	127	152	9.5	10.74
FSPIB12715212.712.7	127	152	12.7	9.2
FSPIB1523059.59.5	152	305	9.5	10.74
FSPIB15230512.712.7*	152	305	12.7	14.3
FSPIB25412712.712.7*	254	305	12.7	TBC.

Beam (Wide Flange)

Part Number	Dimension (A) mm	Dimension (B) mm	Thickness mm	Weight (kg/m)
FSPHB76766.46.4*	76	76	6.4	2.67
FSPHB1021026.46.4	102	102	6.4	3.59
FSPHB1021028.08.0	102	100	8.0	4.50
FSPHB1521526.46.4*	152	152	6.4	5.43
FSPHB1521529.59.5*	152	152	9.5	8.10
FSPHB2032036.46.4	203	203	6.4	7.50

* Standard Sizes

** Non-Standard Sizes Available Upon Request



Structural Profile Appendix

Beam (Wide Flange) (cont.)

Part Number	Dimension (A) mm	Dimension (B) mm	Thickness mm	Weight (kg/m)
FSPHB2032039.59.5	203	203	9.5	8.10
FSPHB20320312.712.7	203	203	12.7	14.36
FSPHB2542549.59.5	254	254	9.5	13.60
FSPHB25425412.712.7	254	254	12.7	18.04
FSPHB30530512.712.7*	305	305	12.7	21.50

Unequal Angle

Part Number	Dimension (A) mm	Dimension (B) mm	Thickness mm	Weight (kg/m)
FSPUA40224.0*	40	22	4.0	0.45
FSPUA50406.35	50	40	6.35	1.20
FSPUA76156.0	76	15	6.0	0.98
FSPUA100506.4	100	50	6.4	1.80
FSPUA1457610	145	76	10	3.85
FSPUA170769.5	170	76	9.5	4.40
FSPUA180808.0	180	80	8.0	3.89
FSPUA254406.4	254	40	6.4	3.61

Channel

Part Number	Dimension (A) mm	Dimension (B) mm	Thickness mm	Weight (kg/m)
FSPC25143.03.0	25	14	3.0	0.28
FSPC26183.23.2	26	18	3.2	0.30
FSPC31234.04.0	32	23	4.0	0.65
FSPC32133.03.0	32	13	3.0	0.25
FSPC40243.23.2	40	24	3.2	0.50

* Standard Sizes

** Non-Standard Sizes Available Upon Request



Structural Profile Appendix

Channel (cont.)

Part Number	Dimension (A) mm	Dimension (B) mm	Thickness mm	Weight (kg/m)
FSPC45286.46.4	45	28	6.4	1.07
FSPC50143.23.2	50	14	3.2	0.44
FSPC50305.05.0	50	30	5.0	0.96
FSPC52506.06.0	52	50	6.0	1.63
FSPC60505.05.0	60	50	5.0	1.44
FSPC70304.54.5	70	30	4.5	0.95
FSPC75355.05.0*	75	35	5	1.37
FSPC76386.46.4	76	38	6.4	1.7
FSPC90355.05.0	90	35	5.0	1.49
FSPC102273.23.2	102	27	3.2	0.91
FSPC102304.04.0	102	30	4.0	1.20
FSPC102444.84.8	102	44	4.8	1.65
FSPC102446.46.4	102	44	6.4	2.1
FSPC1501006.46.4	150	100	6.4	4.1
FSPC152426.46.4	152	42	6.4	2.72
FSPC152429.59.5*	152	42	9.5	3.95
FSPC15250.89.59.5*	152	50.8	9.5	4.35
FSPC1604888	160	48	8	3.7
FSPC203566.46.4	203	56	9.5	5.34
FSPC203569.59.5*	203	56	9.5	5.34
FSPC20310212.712.7	203	102	12.7	9.2
FSPC2547012.712.7	254	70	12.7	8.9
FSPC2927012.712.7	292	70	12.7	9.6
FSPC30576.212.712.7	305	76.2	12.7	10.50
FSPC356891919	356	89	19	18.10

* Standard Sizes

** Non-Standard Sizes Available Upon Request



Structural Profile Appendix

Rectangular Hollow Sections

Part Number	Dimension (A) mm	Dimension (B) mm	Thickness mm	Weight (kg/m)
FSPRHS44253.2	44	25	3.0	0.80
FSPRHS44203.2	44	20	3.2	0.75
FSPRHS44203.2	44	20	4.0	0.62
FSPRHS51253.0	25	51	3.0	0.79
FSPRHS51256.4	25	51	3.2	1.54
FSPRHS51254.0 (stair)	51	25	6.4	1.01
FSPRHS51384.0 (stair)	51	38	3.2	1.22
FSPRHS52325.0 (stair)	52	32	5.0	1.41
FSPRHS75384.0*	75	38	6.0	1.70
FSPRHS76306.0	76	30	5.0	1.60
FSPRHS80605.0	80	60	4.5	2.5
FSPRHS80304.0	80	30	5	1.60
FSPRHS90305.0	90	30	6.4	2.25
FSPRHS90635.0	90	65	5.0	2.75
FSPRHS91384*	38	91	3.2	1.78
FSPRHS100755.0	100	75	4.0	3.25
FSPRHS101.650.86.35	101.6	50.8	4.8	3.45
FSPRHS112916.4	91	112	6.4	4.46
FSPRHS12045x3	45	120	6.4	2.0
FSPRHS125756.0	125	75	6.4	4.35
FSPRHS140305.0	140	30	9.5	3.20
FSPRHS1501006.35	150	100	9.5	5.80
FSPRHS175509	50	175	8	7.0
FSPRHS200305.0	200	30	9.5	4.30
FSPRHS30576.212.7	305	76	9.5	10.5
FSPRHS3568919	356	89	12.7	18.10

* Standard Sizes

** Non-Standard Sizes Available Upon Request



Structural Profile Appendix

Square Hollow Sections

Part Number	Dimension (A) mm	Dimension (B) mm	Thickness mm	Weight (kg/m)
FSPSHS25253.2*	25	25	3.2	0.53
FSPSHS25256.35	25	25	6.35	0.9
FSPSHS32323.2	32	32	3.2	0.7
FSPSHS32326.4	32	32	6.4	1.24
FSPSHS38383.2	38	38	3.2	0.85
FSPSHS38385*	38	38	5.0	1.25
FSPSHS38386.4	38	38	6.4	1.54
FSPSHS44443.2	44	44	3.2	1.01
FSPSHS44446.4	44	44	6.4	1.83
FSPSHS50503.2	50	50	3.2	1.14
FSPSHS50503.5	50	50	3.5	1.24
FSPSHS50504	50	50	4.0	1.42
FSPSHS50505	50	50	5.0	1.74
FSPSHS50506.4*	50	64	6.4	2.12
FSPSHS54543.2	54	54	3.2	1.24
FSPSHS54544.8	54	54	4.8	1.78
FSPSHS60605.0	60	60	5.0	2.10
FSPSHS64643.2	64	64	3.2	1.48
FSPSHS64644.4	64	64	4.4	1.97
FSPSHS64646.4	64	64	6.4	2.80
FSPSHS76763.2	76	76	3.2	1.77
FSPSHS76765	76	76	5.0	2.7
FSPSHS76766.4	76	76	6.4	3.39
FSPSHS76769.5	76	76	9.5	4.89
FSPSHS89896.4	89	89	6.4	3.95
FSPSHS90905.0	90	90	5.0	3.50
FSPSHS90905.0	90	90	5.0	4.10
FSPSHS10010010*	100	100	10	6.90

* Standard Sizes

** Non-Standard Sizes Available Upon Request



Structural Profile Appendix

Square Hollow Sections (cont.)

Part Number	Dimension (A) mm	Dimension (B) mm	Thickness mm	Weight (kg/m)
FSPSHS1021023.2	101	101	3.2	2.38
FSPSHS1021025	101	101	5.0	3.61
FSPSHS1021026.4*	101	101	6.4	4.61
FSPSHS1021028	101	101	8.0	6.0
FSPSHS1251256.4	125	125	6.4	5.90
FSPSHS1251258.0	125	125	8.0	7.30
FSPSHS1521526.4	152	152	6.4	7.10
FSPSHS1521529.5	152	152	9.5	10.4
FSPSHS15215212.7	152	152	12.7	13.5
FSPSHS25253.175	25	25	3.175	0.70

Flat Strip

Part Number	Dimension (A) mm	Thickness (B) mm	Weight (kg/m)
FSPFS196.4	19	6.4	0.25
FSPFS1922	19	22	0.85
FSPFS24.63.4	24.6	3.4	0.15
FSPFS25.48	25.4	8.0	0.40
FSPFS303	30	3	0.18
FSPFS306.4	30	6.4	0.37
FSPFS358	35	8	0.54
FSPFS355	38	5	0.37
FSPFS388.0	38	8.0	0.60
FSPFS3815.0	38	15.0	1.12
FSPFS408	40	8	0.62
FSPFS4010.0	40	10.0	0.79
FSPFS466.4	46	6.4	0.58

* Standard Sizes

** Non-Standard Sizes Available Upon Request



Structural Profile Appendix

Flat Strip (cont.)

Part Number	Dimension (A) mm	Thickness (B) mm	Weight (kg/m)
FSPFS502	50	2	0.25
FSPFS504*	50	4	0.38
FSPFS506	50	6	0.59
FSPFS508	50	8	0.76
FSPFS5015	50	15	1.43
FSPFS5025	50	25	2.5
FSPFS602.0	60	2.0	0.24
FSPFS604.0	60	4.0	0.48
FSPFS644.8	64	4.8	0.60
FSPFS6415	64	15	1.81
FSPFS704	70	4	0.55
FSPFS769.5	76	9.5	1.42
FSPFS7614	76	14	2.05
FSPFS10010	100	10	1.95
FSPFS10025.0	100	25	4.85
FSPFS1023.2	102	3.2	0.63
FSPFS1025	102	5	0.97
FSPFS1276.4	127	6.4	1.30
FSPFS12010*	120	10	2.4
FSPFS1276.4	127	6.4	1.54
FSPFS15210	152	10	2.92
FSPFS15220.0	152	20	5.90
FSPFS19015.0	190	15	5.42
FSPFS25012	250	12	5.7

* Standard Sizes

** Non-Standard Sizes Available Upon Request



Structural Profile Appendix

Round Tube

Part Number	Outer Diameter (OD) mm	Thickness (T) mm	Weight (kg/m)
FSPRT253.2	25	3.2	0.44
FSPRT263.0	26	3.0	0.42
FSPRT264.8	26	4.8	0.63
FSPRT323.2	32	3.2	0.55
FSPRT325*	32	5	0.81
FSPRT326	32	6	0.96
FSPRT383.2	38	3.2	0.65
FSPRT384	38	4	0.81
FSPRT385*	38	5	1.0
FSPRT386.4	38	6.4	1.18
FSPRT4145	41	4.5	0.98
FSPRT423.2	42	3.2	0.7
FSPRT425	42	5	1.11
FSPRT426.4	42	6.4	1.45
FSPRT486.4	48	6.4	1.58
FSPRT503.2	50	3.2	0.84
FSPRT504.0	50	4.0	1.10
FSPRT505*	50	5	1.34
FSPRT506.4	50	6.4	1.67
FSPRT503.5	50	3.5	0.96
FSPRT50.86.4	50.8	6.4	1.7
FSPRT50.83.2	50.8	3.2	0.68
FSPRT605.5	60	5.5	1.85
FSPRT606.5	60	6.5	2.10
FSPRT643.5	64	3.5	1.26
FSPRT646.4	64	6.4	2.38
FSPRT695.0	69	5.0	2.10
FSPRT708.0	70	8.0	3.20
FSPRT754.2	75	4.2	1.80

* Standard Sizes

** Non-Standard Sizes Available Upon Request



Structural Profile Appendix

Round Tube (cont.)

Part Number	Outer Diameter (OD) mm	Thickness (T) mm	Weight (kg/m)
FSPRT766.4	76	6.4	2.64
FSPRT855.0	85	5.0	2.40
FSPRT895.0	89	5.0	1.54
FSPRT895.0	89	5.0	2.51
FSPRT896.4	89	6.4	3.13
FSPRT995.0	99	5.0	2.81
FSPRT1014.3	101	4.3	2.60
FSPRT1015.0	101	5.0	2.90
FSPRT1016.4	101	6.4	3.62
FSPRT1143.2	114	3.2	2.12
FSPRT1145.0	114	5.0	3.25
FSPRT1146.4	114	6.4	4.11
FSPRT1149.5	114	9.5	5.93
FSPRT13925.0	139	25.0	18.0
FSPRT1404.0	140	4.0	3.40
FSPRT1406.35	140	6.35	5.20
FSPRT1503.2	150	3.2	2.81
FSPRT1505	150	5.0	4.35
FSPRT1506.4	150	6.4	5.50
FSPRT1509.5	150	9.5	8.00

* Standard Sizes

** Non-Standard Sizes Available Upon Request



Structural Profile Appendix

Rods (Solid Round)

Part Number	Diameter (D) mm	Weight (kg/m)
FSPRSR4.2	4.2	0.03
FSPRSR6	6	0.08
FSPRSR8	8	0.1
FSPRSR9.5	9.5	0.14
FSPRSR12.7*	12.7	0.26
FSPRSR16*	16	0.41
FSPRSR19	19	0.55
FSPRSR20	20	0.62
FSPRSR22*	22	0.72
FSPRSR25.4	25.4	1.0
FSPRSR31.8	31.8	1.51
FSPRSR38	38	2.15

* Standard Sizes

** Non-Standard Sizes Available Upon Request





Terra
Firma™

Phone: 1800 PITLIDS (1800 748 543)

Email: info@tfpl.com.au

139 Somerset Rd,
Campbellfield Victoria 3061 Australia

terrafirmaindustries.com.au